
Mainstreaming Climate Change Adaptation at the Local Government Unit through Community-engaged scholarship

Amparo, JMS; Mendoza, MET; Visco, ES; Lagos, DT; and Jimena, CEG

Assistant Professors, Department of Social Development Services,
College of Human Ecology, University of the Philippines Los Banos

3rd Asia Pacific Climate Change Adaptation Forum

Incheon, Republic of Korea, March 18-20, 2013 Songda Convesia

Presentation Outline

- Context
 - Policy Context of CCA and DRRM: International, National and Local Levels
 - Community Engaged Scholarship: The CHE, UPLB experience
 - Case Site
 - Experience
 - Phase 1: Capacity Building of the municipal agency focal persons and barangay development councils
 - Phase 2: Creation of Barangay Disaster Risk Reduction PLans
 - Learnings and Insights
 - Recommendations
-

Policy Context of CC and DRRM

- Hyogo Framework for Action
- Philippine Disaster Risk Reduction Management Act of 2010 (RA 10121)
- Climate Change Act of 2009 (RA 9729)
- DILG-MC 2008-69 (Encouraging LCEs and Sanggunians to Implement Climate Change Adaptation and Disaster Risk Reduction Measures);
- DILG-MC 2008-123 (Mobilizing Local Actions to Address the Impacts of Climate Change);
- DILG-MC No. 2008-161 (November 3, 2008) (Trainer's Training on Mobilizing Actions to Address the Impacts of Climate Change);
- DILG-MC No. 2009-21 amending MC No. 2008-123 to include the National Movement of Young Legislators as one of the institutional partners in Mobilizing Local Actions to Address the Impacts of Climate Change; and
- DILG-MC 2009-73 (National Conference on Empowering LGUs to Clean the Air and Address Climate Change Through Partnership)
- Local Government Code of 1991
- Laguna Three-Year Provincial DRRM Plan

National Framework Strategy on Climate Change

CLIMATE CHANGE

- Increasing temperatures
- Changing rainfall patterns
- Sea level rise
- Extreme weather events

CLIMATE PROCESS DRIVERS

- Energy
- Transport
- Land Use Change & Forestry
- Agriculture
- Waste

VISION:

A climate risk-resilient Philippines with healthy, safe, prosperous and self-reliant communities, and thriving and productive ecosystems

IMPACTS AND VULNERABILITY

- Ecosystems (River Basin, Coastal & Marine, Biodiversity)
- Food security
- Water resources
- Human health
- Infrastructure
- Energy
- Human society

SUSTAINABLE DEVELOPMENT

Goal: To build the adaptive capacity of communities and increase the resilience of natural ecosystems to climate change, and optimize mitigation opportunities towards sustainable development.



ADAPTATION

- Enhanced Vulnerability and Adaptation Assessments
- Integrated Ecosystem-Based Management
- Climate-Responsive Agriculture
- Water Governance & Management
- Climate-Responsive Health Sector
- Disaster Risk Reduction & Management

MITIGATION

- Energy Efficiency & Conservation
- Renewable Energy
- Environmentally Sustainable Transport
- Sustainable Infrastructure
- National REDD+ Strategy
- Waste Management

Capacity Development Knowledge Management IEC and Advocacy Gender Mainstreaming Research and Development Technology Transfer

CROSS-CUTTING STRATEGIES

Multi-stakeholder Partnerships Financing Valuation Policy, Planning and Mainstreaming

MEANS OF IMPLEMENTATION

Community Engaged Scholarship

- "Community-engaged scholarship is scholarship that involves the faculty member in a mutually beneficial partnership with the community."- *Linking Scholarship and Communities: The Report of the Commission on Community-Engaged Scholarship in the Health Professions*
 - "The scholarship of engagement means connecting the rich resources of the university to our most pressing social, civic and ethical problems, to our children, to our schools, to our teachers and to our cities..."Ernest Boyer in *The Scholarship of Engagement*
-



Source: Community- Engaged Partnerships for Health

The Case Site

Legend

-  Lake
-  Watersheds
-  Selected Municipalities
-  Laguna

12°20'N

12°25'N

121°00'E

121°00'E

121°00'E

+

+

+

+

+

+

+

+



PROVINCE OF LAGUNA



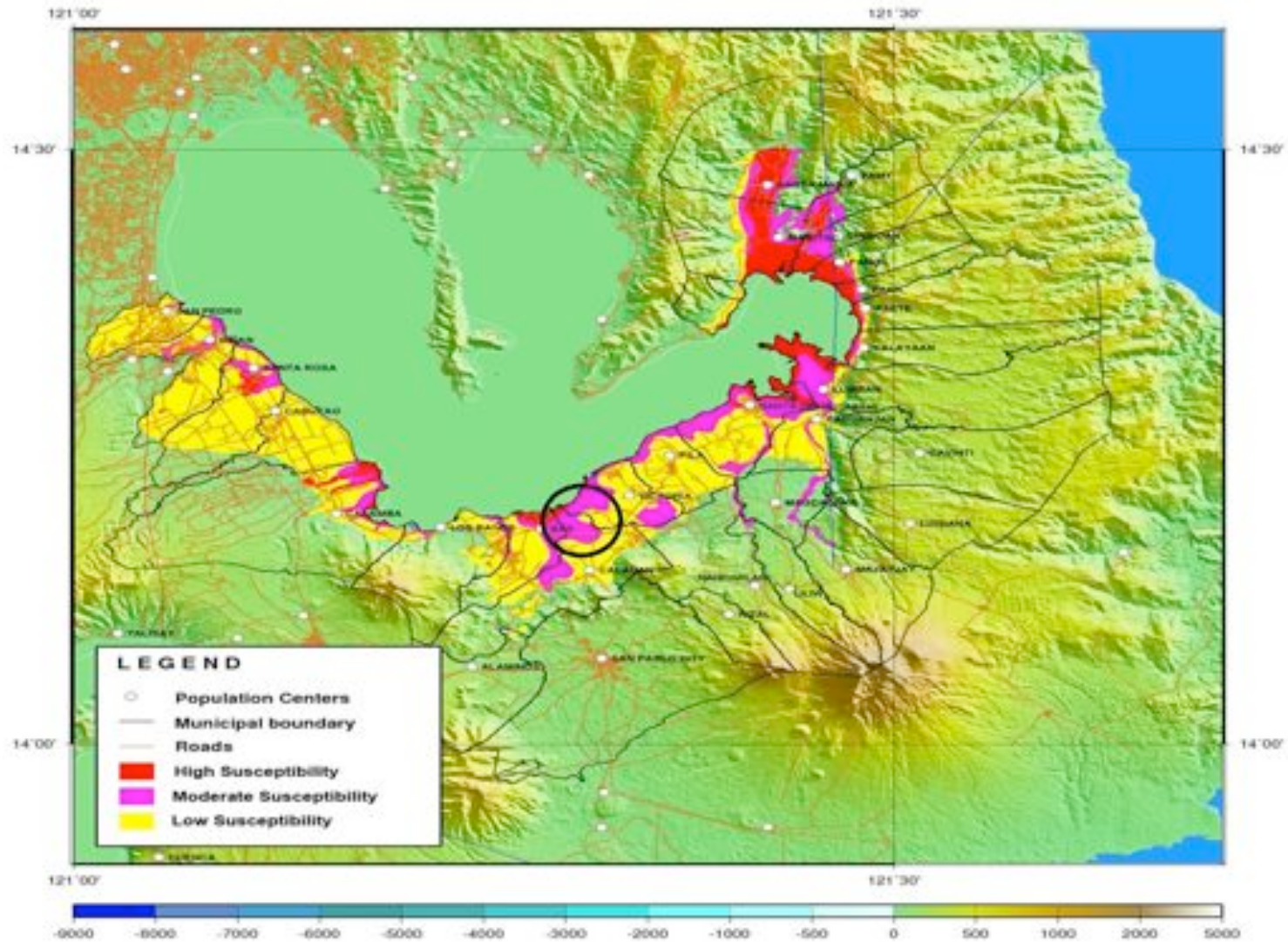
Source: NAMRIA, DA-BAR

121°00'E

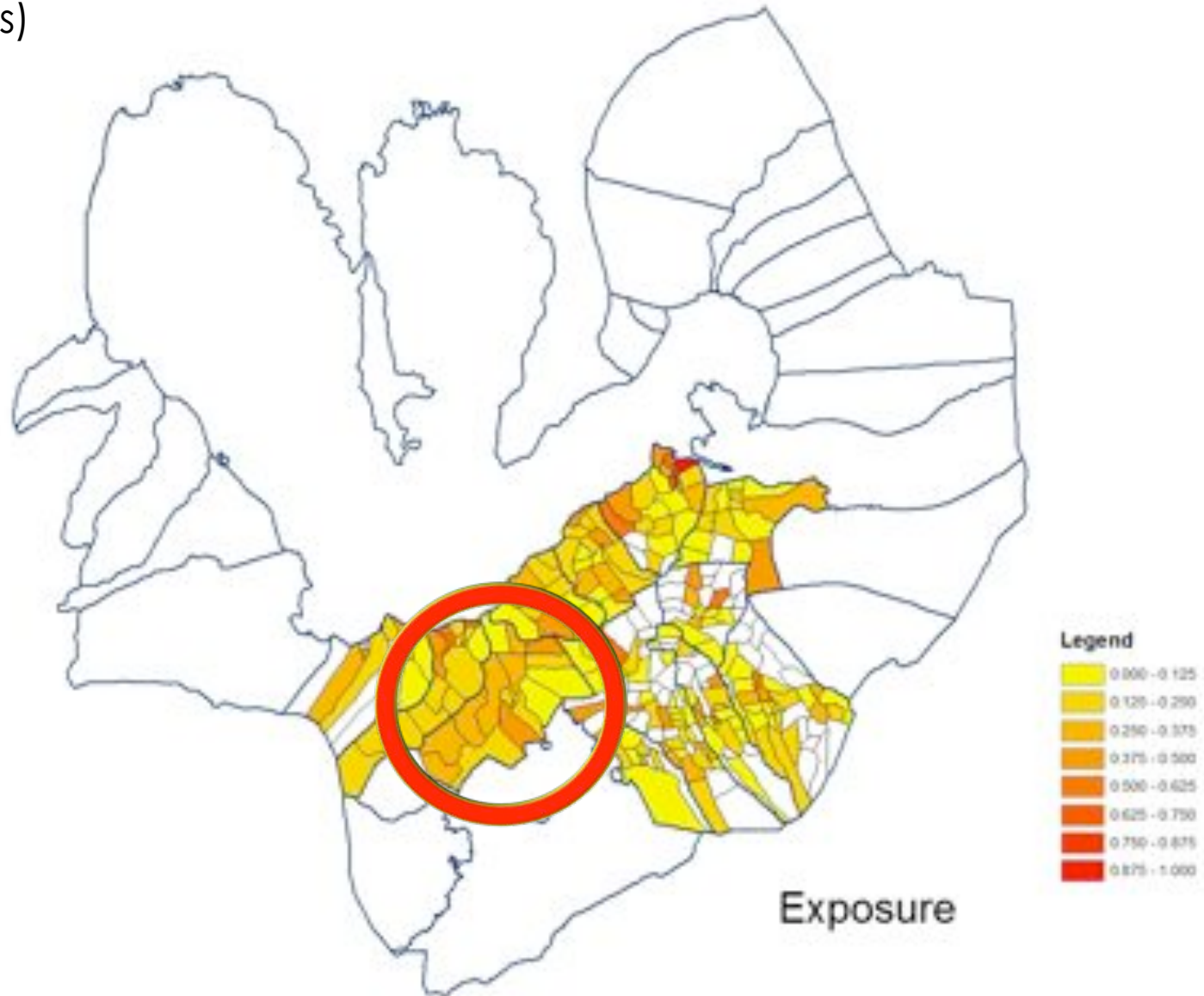
121°00'E

121°00'E

Hydro-meteorological map of Laguna

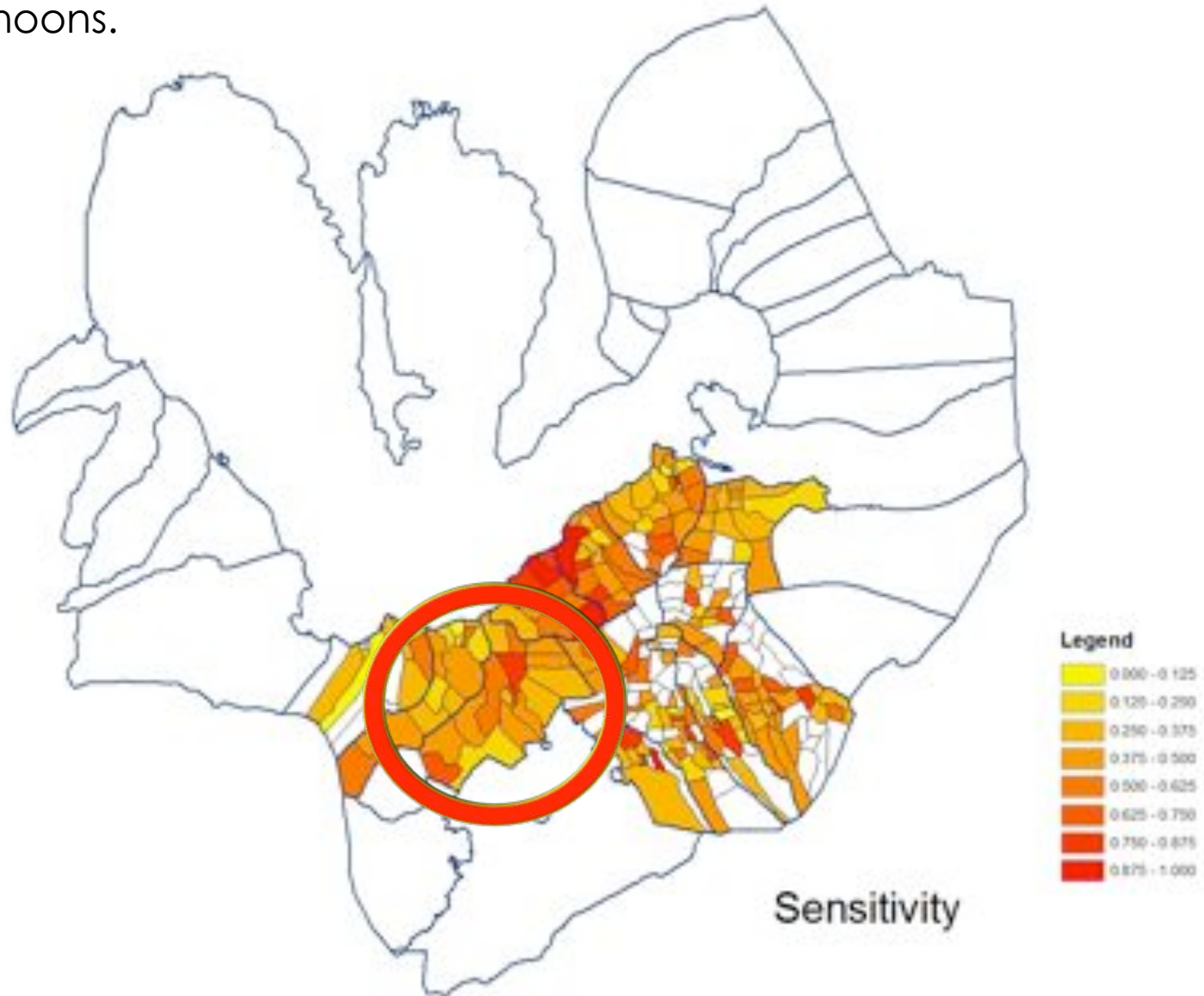


Calauan has low to medium exposure to hazards (flooding, typhoons)



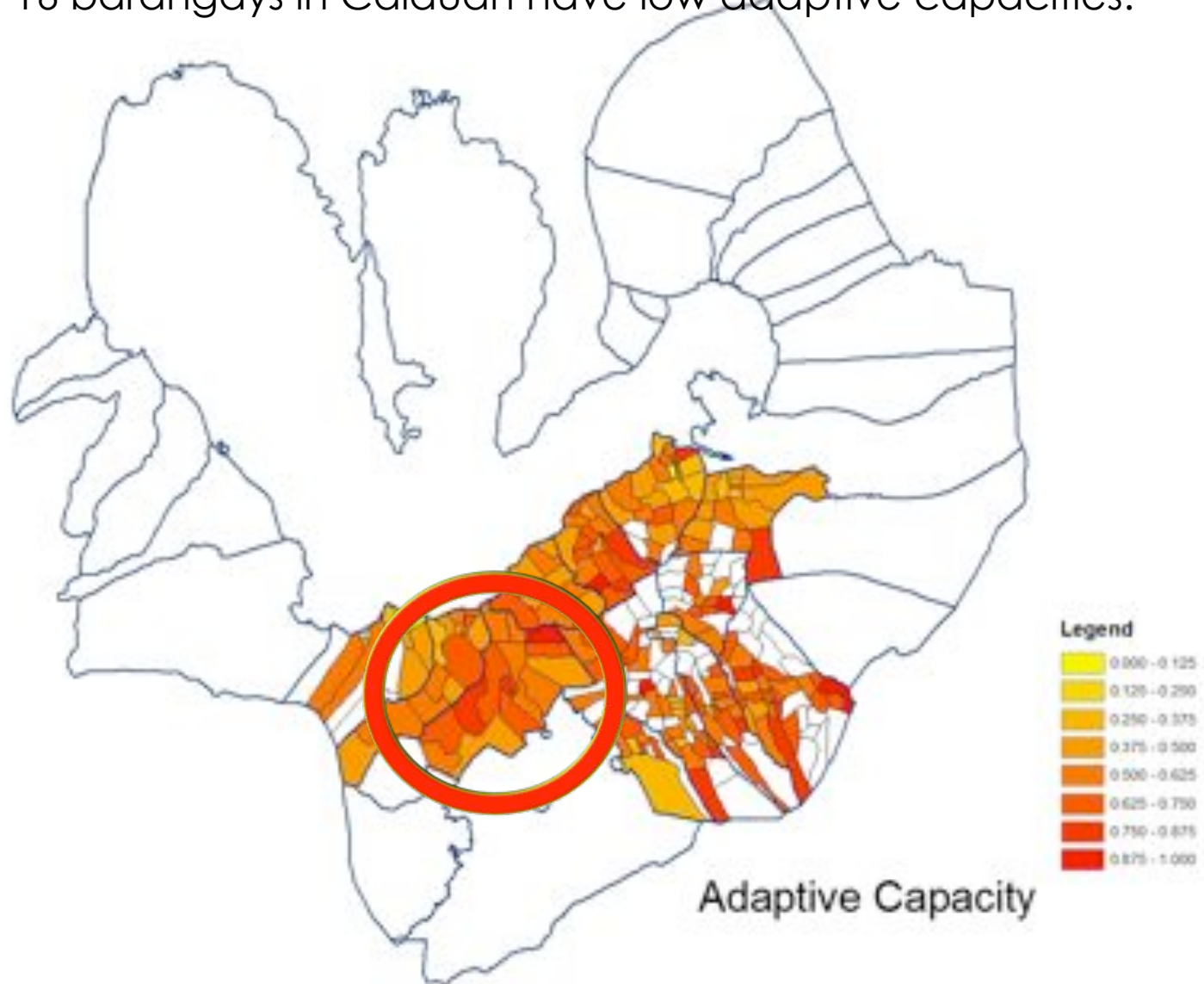
Source: Mendoza, et al. 2012. Vulnerability Mapping in Selected Municipalities in Laguna, Philippines. IDRC, EEPSEA, UPLB, SEARCA

Calauan – 5 out of 16 low land barangays sensitive to floods and typhoons.



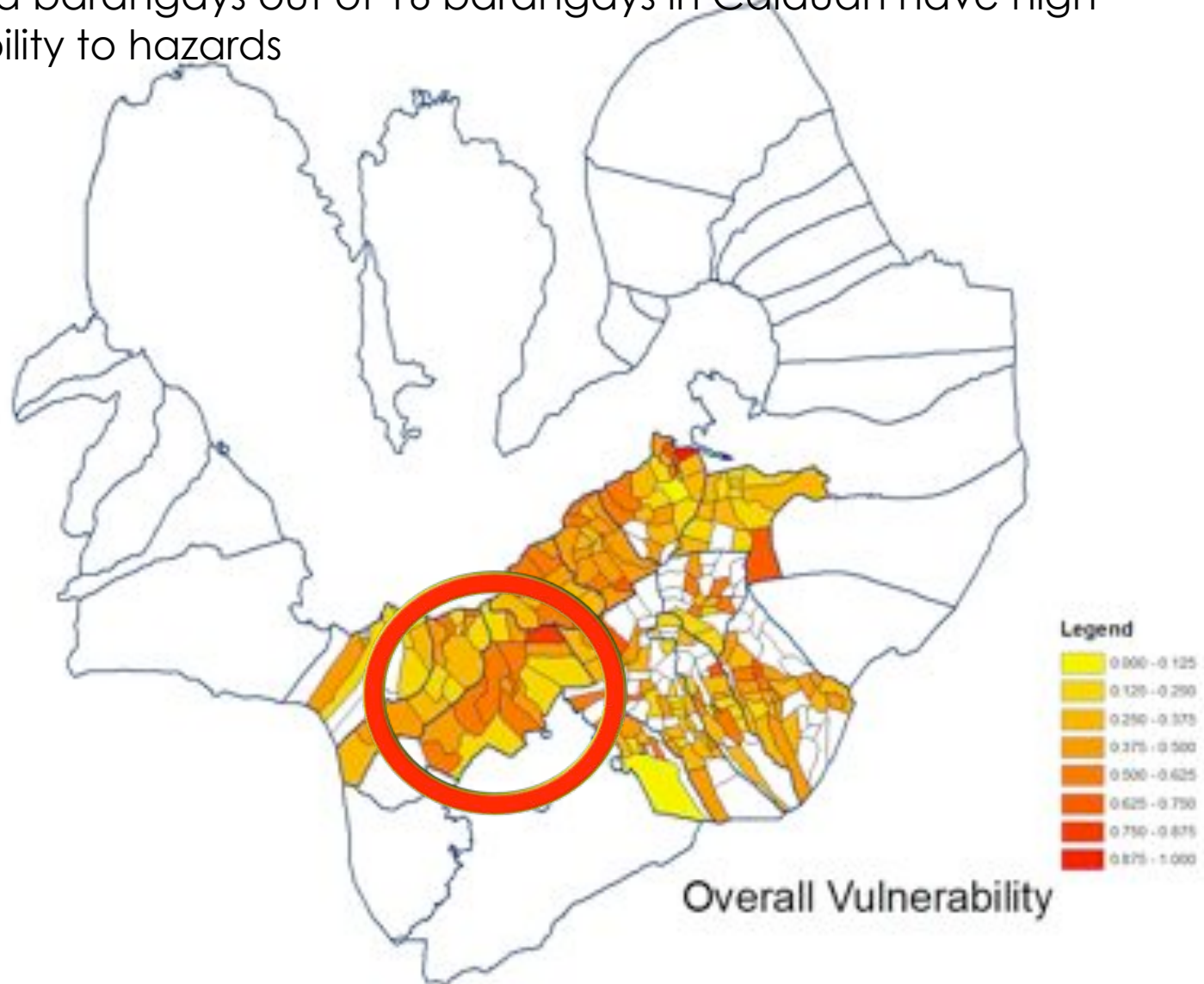
Source: Mendoza, et al. 2012. Vulnerability Mapping in Selected Municipalities in Laguna, Philippines. IDRC, EEPSEA, UPLB, SEARCA

14 out of 16 barangays in Calauan have low adaptive capacities.



Source: Mendoza, et al. 2012. Vulnerability Mapping in Selected Municipalities in Laguna, Philippines. IDRC, EEPSEA, UPLB, SEARCA

7 lowland barangays out of 16 barangays in Calauan have high vulnerability to hazards



Source: Mendoza, et al. 2012. Vulnerability Mapping in Selected Municipalities in Laguna, Philippines. IDRC, EEPSEA, UPLB, SEARCA

Phase 1: Capacity Building on PCVA and DRRM Planning

- Organizing Partners; Municipal Government of Calauan, Laguna and Department of Social Development Services, College of Human Ecology, University of the Philippines Los Banos
 - 99 participants
 - Municipal agency officers and 17 barangay development councils
 - May 8-10, 2012; May 23-25, 2012 (Three-day training)
 - Calauan, Laguna
-

Participatory Community Vulnerability Assessment (PCVA)

- Tool in assessing the perception and experiences in hazards, the effects of hazards on people and property, capacity and resources, governance structure or policies and laws pertaining and laws pertaining to risk reduction
 - Involvement of key stakeholders specifically the marginalized and vulnerable sectors (women, youth, senior citizens, farmers/fisherfolks, etc.)
 - Tools: FGD, participatory mapping, vulnerability and capacity matrix, historical timeline
-

Day 1: Inputs (Concepts, Situationer Policies, PCVA Tools, CBDRRM Planning Process)



**Disaster
Risk
Reduction
& Management**





Day 2: Actual Conduct of PCVA and DRRM Planning



Day 3: Presentation of Outputs and Planning for Next Steps

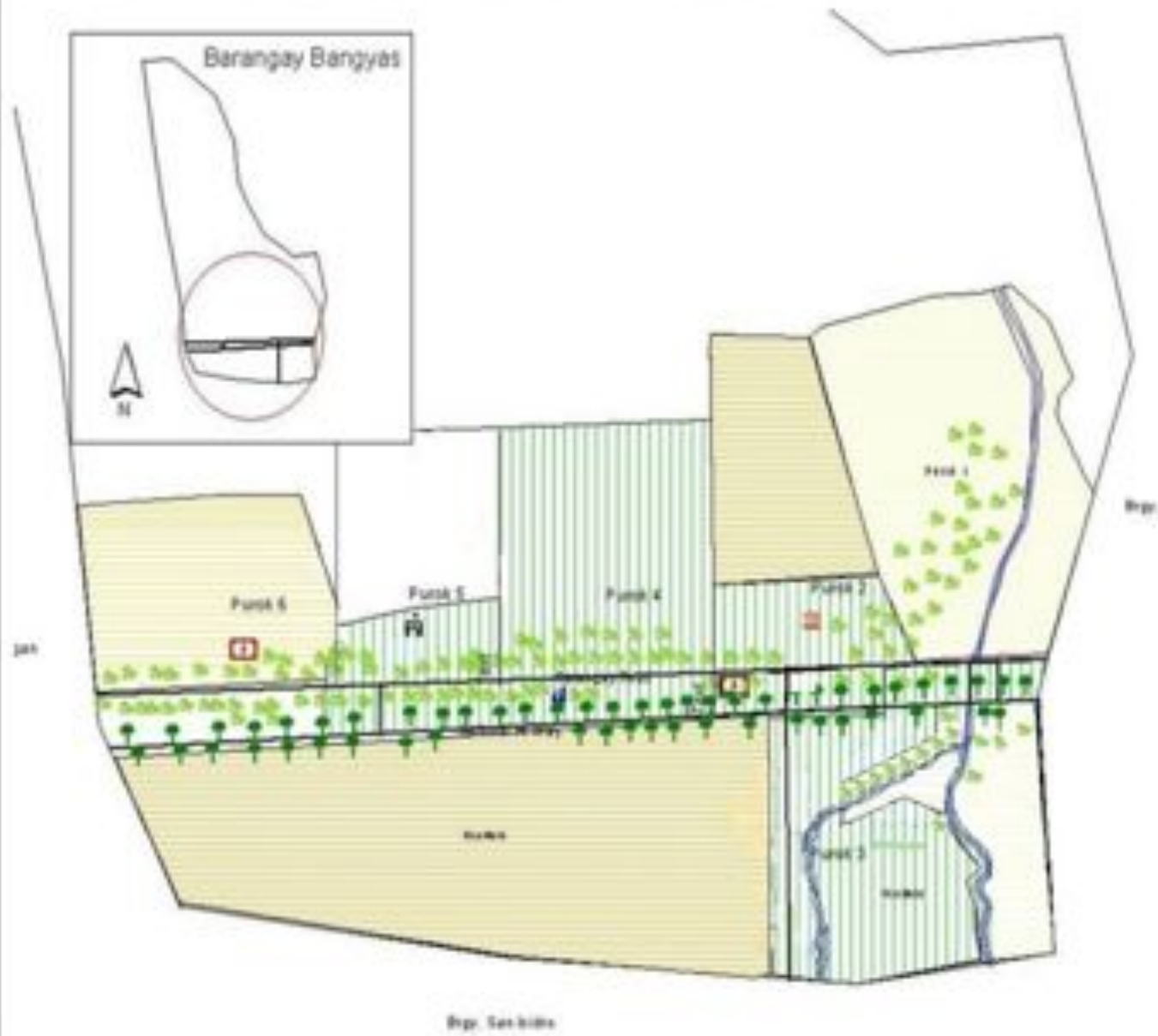
Phase 2: Barangay Disaster Risk Reduction Plans

- BDRRM Plan for 2013
 - SDS 31: Community Services and Programs (BS Human Ecology course)
 - Duration: June 2012 – October 2012
 - Barangay development council (barangay council, sectoral groups) as co-facilitators, participants and main authors
 - Students as facilitators, faculty as supervisors
 - First LGU in Laguna that complied with the creation of BDRRM plans in all of its barangay
-

BDRRM Planning Activities

- SWOT of Barangay Capacities to Climate Change
 - Evaluation research on capacities of social services to climate change and disaster risk reduction and management
 - Participatory Barangay Disaster Risk Mapping
 - Community DRRM Planning
-

BARANGAY DISASTER RISK MAP



Province of Laguna
Municipality of Calauan
BARANGAY BANGYAS

Legend:

- Road Network
- River
- Brgy. Hall
- Household
- Basketball Court
- Trees
- Chapel

Hazard:

- Flood Knee Deep
- Flood Waist Deep
- Flood Chest Deep

Source:
FPDCO, MPDO/CPDO, Barangay

Prepared by:

FPDCO GIS Team
Feb 2012



Fig. 1. Disaster Risk Map

Sample BDRRM Plan Matrix

BARANGAY RISK REDUCTION AND MANAGEMENT PLAN 2013
PAMAHALAANG BARANGAY NG HANGGAN, CALAUAN, LAGUNA
HAZARD: BAHAG (FLOOD)

PROGRAM/PROYECTO/GAWAIN	SCHEDULE	INAASAHANG RESULTA	TAGA-PANGASIWA	KALANGANG PONDOD	EVALUATION
MITIGATION - DRAINAGE/RIVER CLEAN-UP	May, 2013 August, 2013	MAGING MABILIS ANG DAUDY NG TUBIG SA PANAHON NG TAG-ULAN	SANGGUNIANG BARANGAY	P200.00-kada tao (P4,000)	INSPEKSYON NG MGA KANAL AT DALUYAN NG TUBIG
PREPAREDNESS - PAGKAKARON NG EVACUATION/RELOCATION AREA	June-September, 2013	MALIKAS ANG NAAPERTUHAN NG BAHAG LAO NA SA PUROK 2 AT PUROK 3	SANGGUNIANG BARANGAY	P250.00-kada tao P3-5,000-Bangka (P17,500.00)	PAGRONDA SA BUONG BARANGAY
RESPONSE - RELIEF OPERATIONS	June-September, 2013	PAGSIBIGAY NG RELIEF GOODS AT KALANGANG GAMOT SA MGA NAAPERTUHAN	SANGGUNIANG BARANGAY DSDWD DOH	P1075.00-kada pamilya (5 miyembro) P550.00-kagamitang pangluto (P325,250.00)	SURIIN KUNG NAKAKUHA NG KARAMPATANG RELIEF GOODS AT MEDISINA BAWAT PAMILYA
RECOVERY/REHABILITATION - DOCUMENTATION - PANGSASAYOD NG MGA LUGAR NA NAAPERTUHAN	June-September, 2013	MAKAPAG-INSPEKSYON SA BUONG BARANGAY	SANGGUNIANG BARANGAY	P300.00-kada tao (P6,000.00)	INSPEKSYON NG BUONG BARANGAY LAO NA NG MGA LUGAR NA NAAPERTUHAN

Presentation of Draft BDRRM Plans to the BDC and sectoral groups



Learnings and Insights

- LGUs particularly the barangays are the frontliners in CCA and DRRM – it is thus important to build their capacities on these
 - Maximize the strengths and resources of each institution (academe –i.e. research, knowledge management, technical know-how; government – policy, hands-on experience, mandate)
 - Political Leadership is an important ingredient in mainstreaming CCA and DRRM in local development (plans and programs)
 - Use of participatory methods in assessment serves as a venue to hear and listen to the inputs and recommendations of various stakeholders (particularly the marginalized sector) in CCA and DRRM
-

Recommendations

- Continuous capacitation of local development councils and key stakeholders on CCA and DRRM specifically on:
 - Knowledge management
 - Resource mobilization
 - Monitoring and evaluation
 - Integration of BDRRM in Local development plans
 - Strengthening local CCA Adaptation policies and programs
 - Research and feedbacking on impacts of community-engaged scholarship to both institutions
 - Further strengthening of partnership between the community and academe in CCA and DRRM projects through institutionalization of partnership, curriculum development or improvement
-

References

- IFRC and Red Crescent Climate Center. CCA Strategies for Local Impact: Key Messages for UNFCCC negotiations. May 2009
- Community-Engaged Partnerships for Health Promoting Health Equity and social justice. <http://depts.washington.edu/uph/scholarship.html>
- Mendoza, MET; Amparo, JMS; Visco, ES. Mainstreaming and Redefining Collective Action and Community-engaged Scholarship. 3rd Asia Pacific Regional Conference on Community Development, UP Diliman, Quezon City, Philippines. October 22-24, 2012
- Mendoza, MET; Ballaran, Jr, V.G.; Arias, J.K.B. Building Capacity to Adapt to Climate Change in Southeast Asia (powerpoint)
- Mendoza, MET; Ballaran, Jr. V.G.; Arias, J.K.B. Responding to the Vulnerability to Flooding: Towards the Transdisciplinarity of Climate Change Adaptation. Paper Presented during the Human Ecology Alternative Learning Sessions (HEALS) Forum, ICOPED, CEM, UPLB, March 4, 2013
- Department of Social Development Services, College of Human Ecology, UPLB. Training Module for the Training of Trainers. Training Workshop on Participatory Capacity Vulnerability Assessment (PCVA) for Disaster Risk Reducation and Management (DRRM Planning), May 23-25, 2012, Calauan, Laguna, Philippines

Maraming Salamat po.
Thank you.
Kamsahamnida.
