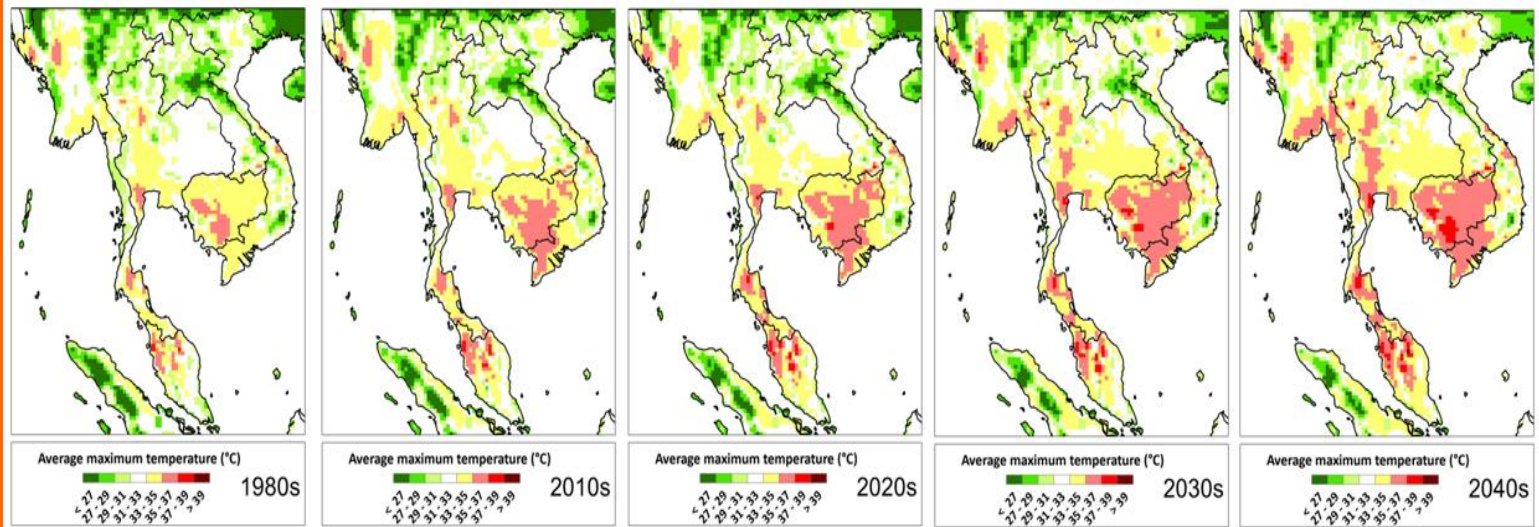
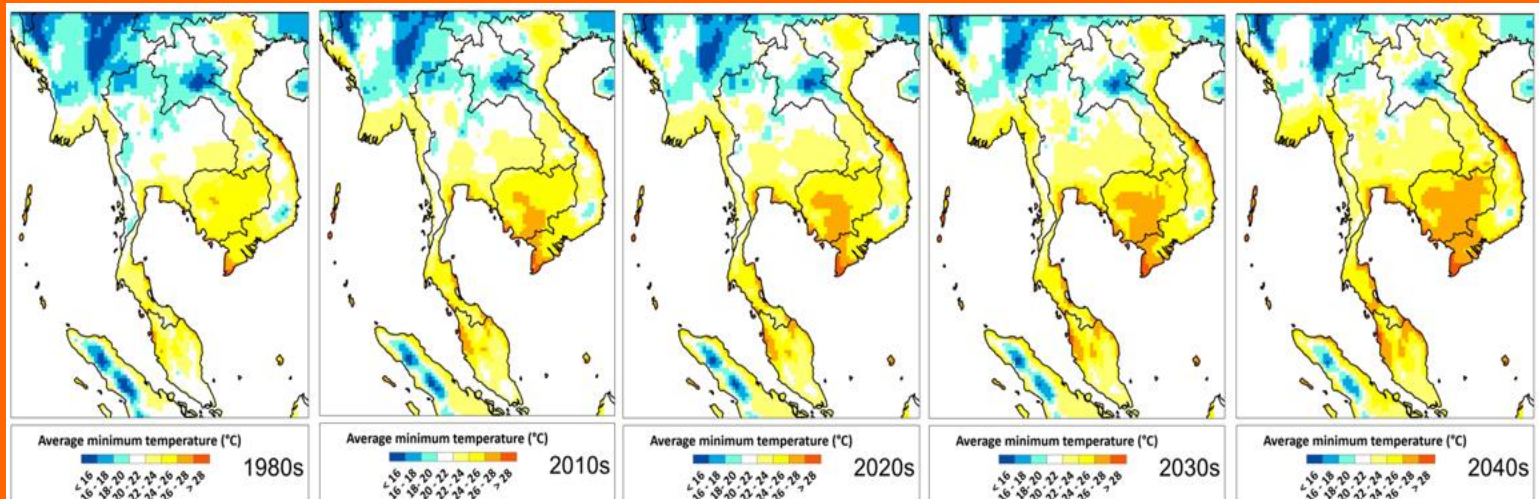


Average Maximum Temperature

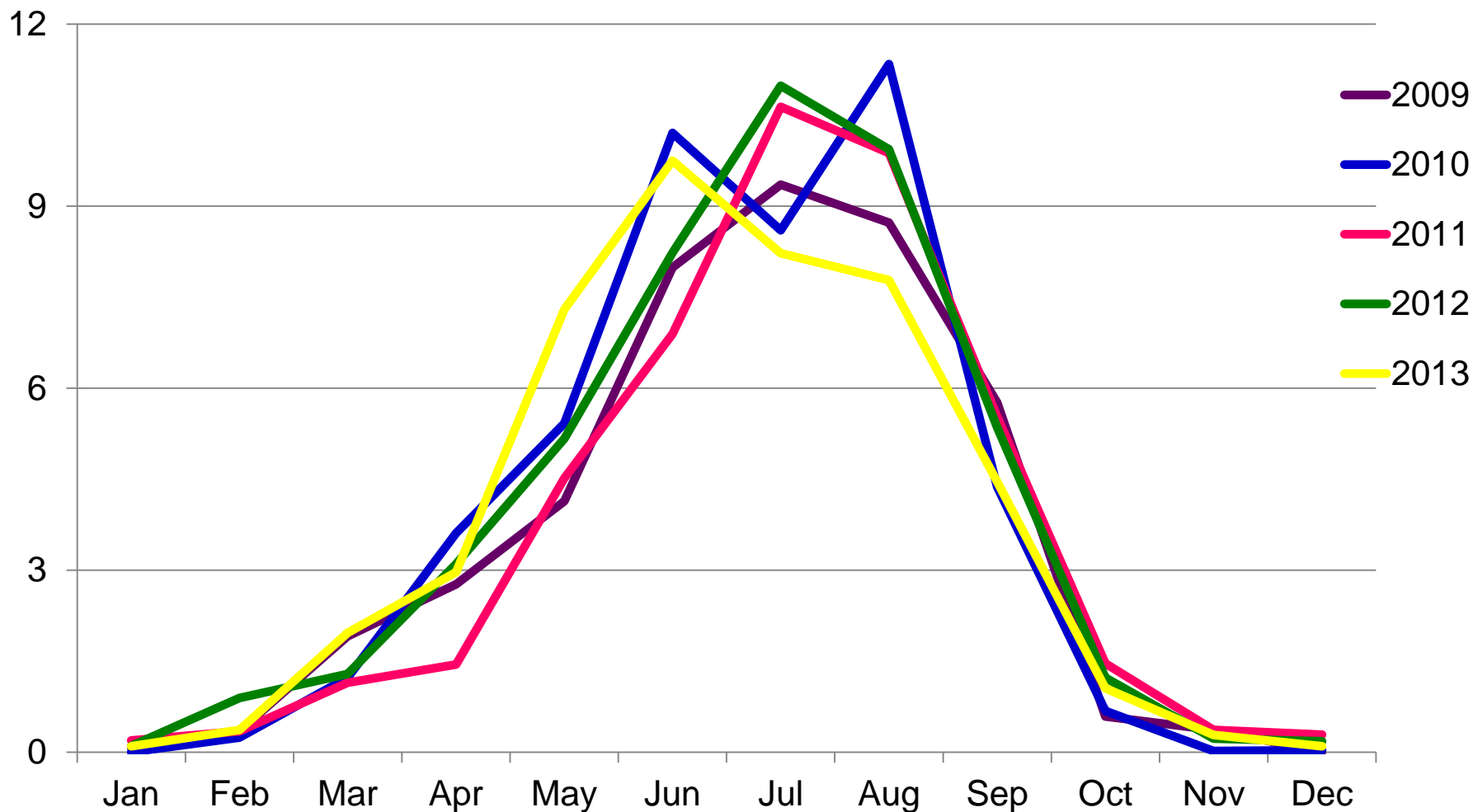


Average Minimum Temperature



Source: SEA START, Chulalongkorn University

Rainfall - Yasothon, Northeastern Thailand



Community-Based Climate Change Adaptation of small scale farmers for food security in Thailand

A Pilot Project in the Northern and Northeastern region of Thailand

Outline of presentation

- Overview of the project
- Key components of the project
- Community Weather Forecast Centre
- Lessons learned



SUPPORTED BY





SUPPORTED BY



Revolving Fund & Water Management System





SUPPORTED BY

Diversified local vegetable gardening

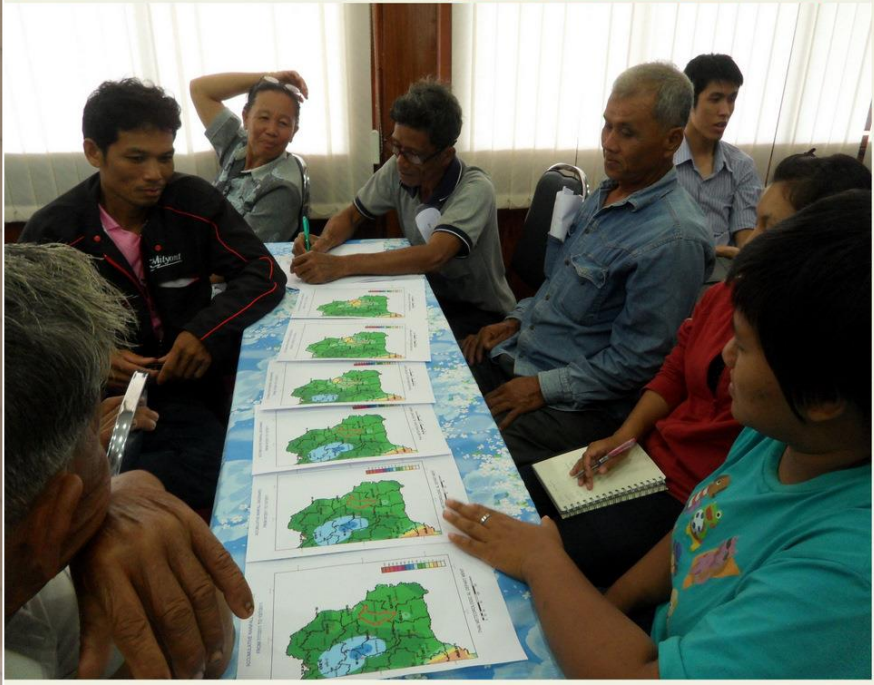
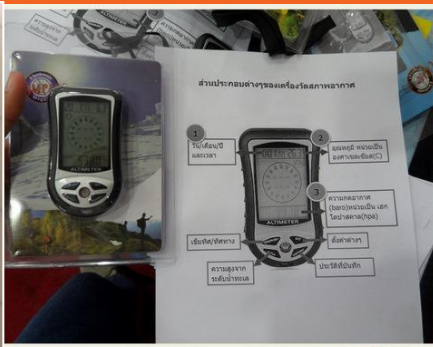
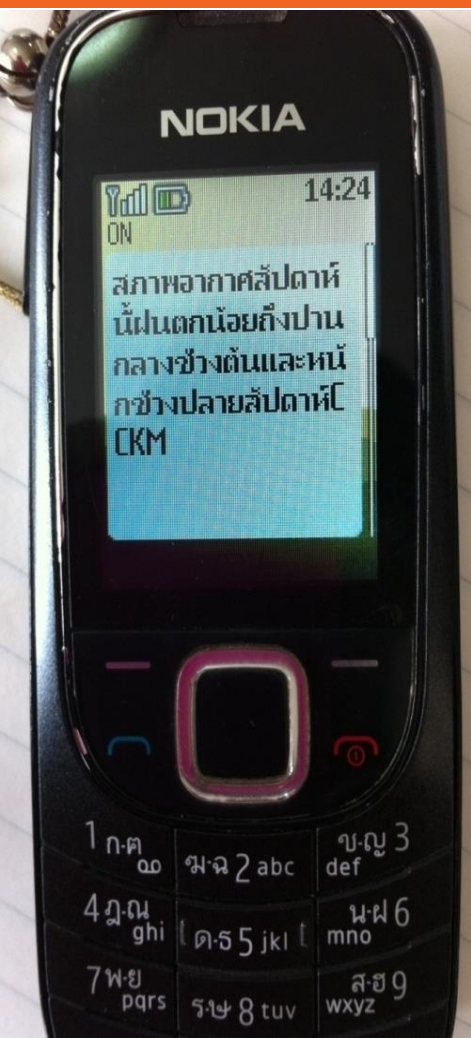




SUPPORTED BY



Community Weather Forecast



การวัดฝน 2554

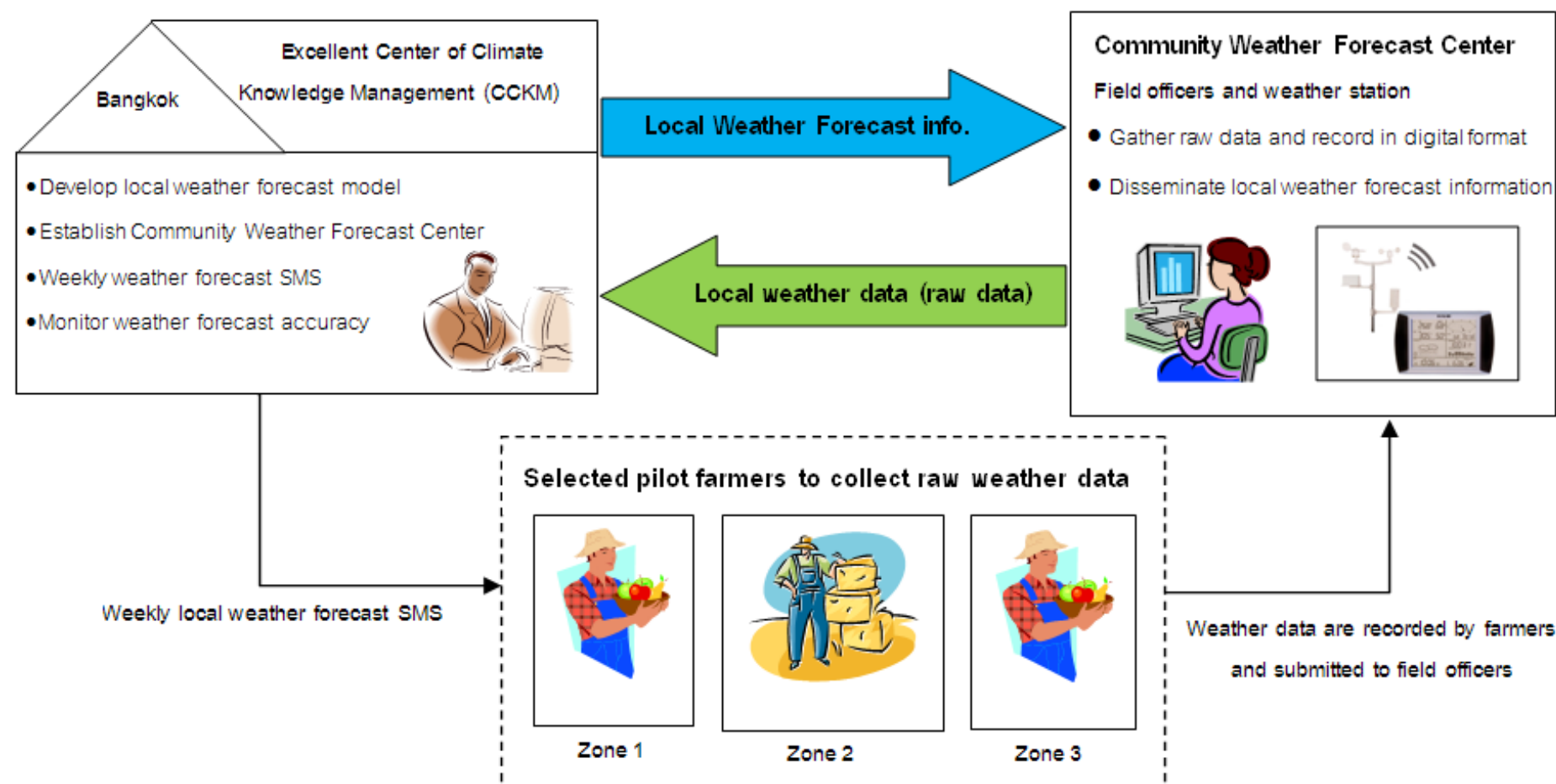
25

วันที่วัด:	เวลา	เวลา
เวลาที่วัด:	9.00 น.	15.00 น.
ผู้มาวัด:		
ความสูงน้ำ:		
ปริมาณน้ำ:		

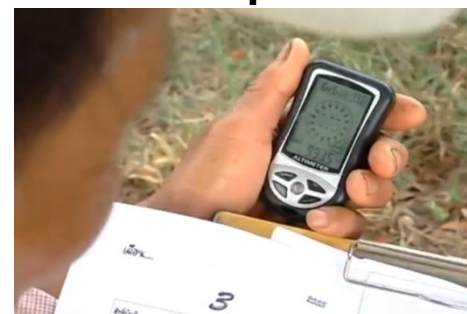
รวมผล:



A Model of Community Weather Forecast Center in Yasothon



1



2



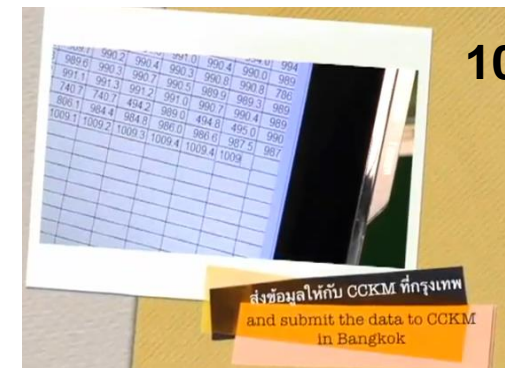
3



4

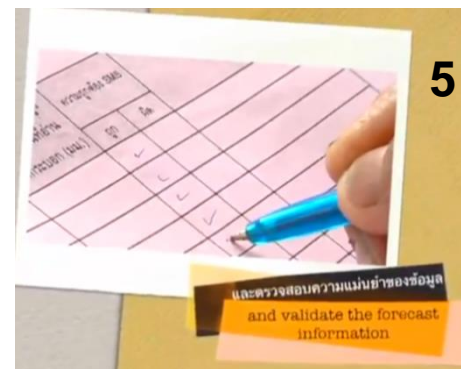


10



Participatory Data Collection Process

5



9



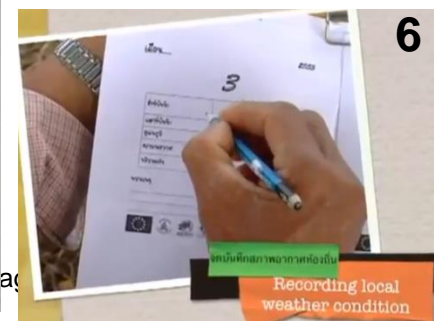
8



7



6





SUPPORTED BY

Community Weather Forecast Centre (CWFC)





SUPPORTED BY



Lessons Learned

- Participatory learning process plays crucial role
- High speed internet signal is required
- Technical and financial support is needed
- Model replication may not be possible



SUPPORTED BY



Summary

- Local weather forecast information helps farmers to plan agricultural production
- Water Management System ensures food security and reduces productivity loss.
- Revolving fund is successfully managed by local organizations and communities.